

Ceftiofur (CEF) Rapid Test Kit

Technical Manual

(GICA)



Scan for more info.

Shenzhen Finder Biotech Co.,Ltd.

Web: www.szfinder.com

Tel: +86 0755 23499025

Email: techsupport@szfinder.com

Add: Building B12, Life Science Industrial Park, Kuiyong Subdistrict,
Dapeng New Area, Shenzhen, China

1 Principle and Application

The test kit is used for detecting Ceftiofur (CEF) in raw milk and is applicable to all kinds of dairy enterprises and testing institutions.

The kit is developed using colloidal gold immunochromatography assay (GICA) based on competition. After the sample solution is added to sample hole, if Ceftiofur is present, it will bind with gold labeled antibodies, thereby preventing the labeled antibodies from binding to the Ceftiofur conjugates on the nitrocellulose membrane. The results are judged according to the contrast of color strength.

2 Technique Data

Detection Limit

Raw Milk 20 ppb (ng/mL)

3 Kit Content

Package specification	20T/Kit
Test device (with disposable dropper)	20
Instruction	1

4 Materials Required but Not Supplied

Equipment: constant temperature device (*for frozen milk only. Fresh milk does not need to be handled*).

Micropipettes: single-channel (20-200μL)

5 Sample Pre-treatment

The temperature in the experimental environment must be above 20°C. **Fresh milk can be tested directly.** The **frozen milk** is obviously granules, which is easy to cause the liquid to fail to reach the control("C") line. The sample should be heated to 40-50°C using a constant temperature device until fully dissolved. **Restore the test kit and samples to room temperature before testing.**

Reminder:

1. Labware must be clean. Use disposable pipette tips to avoid contamination of interference results.

2. **Repeated freezing and thawing of raw milk can lead to deterioration, thereby affecting the experimental results.**

3. **The fresh milk sample can be stored at 2-8°C for 24 hours to prevent invalidation or contamination if not assayed immediately.**

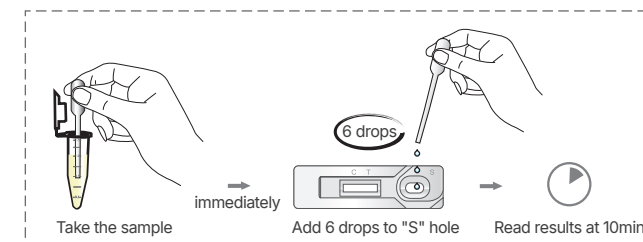
4. **The testing is intended solely for raw milk; testing processed milk is not recommended.**

6 Test Steps

1) Tear the foil pouch, take out of the test card, and put on a flat, clean work surface.

2) Pipette the prepared sample solution with the provided dropper, then add 6 drops (approximately 150 μL) vertically and slowly into the sample hole("S").

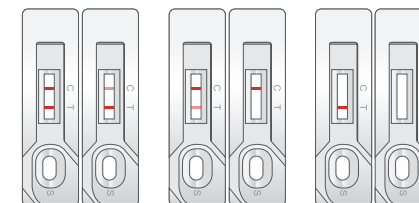
3) Read the result at room temperature in 10 minutes. Results are invalid after more than 30 minutes.



7 Results Judgement

Negative: Test

("T") line and control("C") line both appear in the result window. The color of the test



Negative

Positive

Invalid

("T") line is consistent or deeper than the control("C") line. It indicates that the concentration of Ceftiofur in the sample is below the detection limit, or absent.

Positive: In the result window, the control("C") line appears, while the Test("T") line does not appear or appears lighter in color than the control("C") line. It indicates that the concentration of Ceftiofur in the sample is above the detection limit.

Invalid: If the control("C") line does not appear, the result might be considered invalid.

8 Notice

8.1 Don't use the expired or damaged products.

8.2 When the test card is taken out of the refrigerator, it should be restored to the room temperature and then opened. The opened test card should be used as soon as possible to avoid failure after being affected by moisture.

8.3 Avoid touching the white nitrocellulose membrane in the middle of the detection card.

8.4 In order to avoid cross-contamination, the droppers cannot pipet another Solution after pipetting one.

8.5 The sample solution to be examined needs to be clear and free of turbid particles. Otherwise, it is prone to lead to blockage, non-obvious color development and other abnormalities, affecting the determination of the experimental results.

9 Storage Conditions |

The kit shall be stored at 2°C to 30°C (35.6°F to 86°F) in dry environment.

Shelf life: 12 months. The date of manufacture is presented in the label of the box.