

Canine Distemper Virus Antigen (CDV Ag) Rapid Test Kit

Technical Manual

(GICA)



Scan for more info.

Shenzhen Finder Biotech Co.,Ltd.
Web: www.szfinder.com
Tel: +86 0755 23499025 Email: techsupport@szfinder.com
Add: Building B12,Life Science Industrial Park, KuiyongSubdistrict, Dapeng New Area, Shenzhen,China

Product Information

Intended Use

Canine distemper, an acute infectious disease affecting dogs, foxes, and martens, is caused by infection with the Canine Distemper Virus (CDV). It is characterized by a biphasic fever, rhinitis, pneumonia, and severe digestive disorders.

This kit is intended for the detection of CDV antigen in canine nasal discharge, saliva, conjunctival secretions, urine, serum, and whole blood. It can be employed for CDV infection screening and auxiliary diagnosis in dogs.

Principle

The kit uses colloidal gold immunochromatography assay (GICA). After being added to sample hole ("S"), the sample will move along the chromatographic membrane with the gold tracers. If there are CDV

antigens in the sample, it will make the test ("T") line colored. If not, no color reaction will be produced. Regardless of a negative or positive result, the control("C") line should always appear, or else the result is considered invalid.

This assay utilizes CDV-specific monoclonal antibodies in a sandwich method for the detection of CDV-specific antigens, offering high sensitivity and excellent specificity. It has been validated to have no cross-reactivity with other common canine viruses such as Canine Parvovirus.

Content

Package specification	20T/Kit
Test device (with disposable dropper)	20
Assay diluent	20
Sampling swab	20
Instruction	1

Storage Conditions

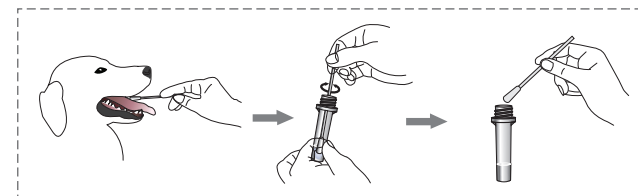
The kit shall be stored at 2°C to 30°C (35.6°F to 86°F) in dry environment. Avoid freezing.

Shelf life: 24 months. The date of manufacture is presented in the label of the box.

Preparation of Sample

For nasal fluid, saliva, and conjunctival secretions:

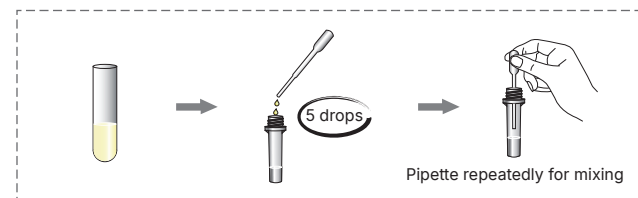
- 1) After moistening the sampling swab with normal saline, swab the dog's saliva (or nasal fluid, conjunctival secretions).
- 2) Immediately insert the swab into the assay diluent tube. Agitate the swab thoroughly until the sample is fully dissolved in the diluent. Squeeze out the excess liquid from the swab against the wall of the tube and discard the swab. The liquid obtained after allowing it to stand within the tube is the **treated sample**.



For urine, serum, whole blood:

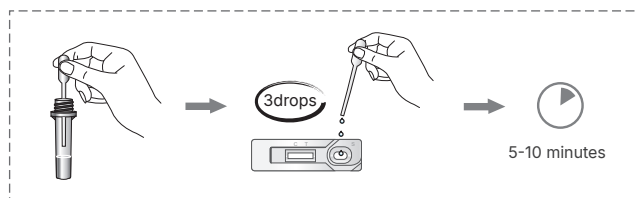
- 1) Add 5 drops (approximately 100uL) of the sample to the assay diluent tube, mix thoroughly, and let the liquid stand for later use. What obtained is the **treated sample**.

Note: In the early stages of canine distemper infection, it is better to use blood as the sample. At the initial stage, when there are no symptoms such as conjunctivitis, dry cough, or diarrhea, the virus is only present in the blood. If canine distemper symptoms are suspected, it is more convenient to use conjunctival epithelial cells and urine as sample.



Test Methods

- 1) Open the foil pouch, take out the test card and put it on a flat and clean work surface.
- 2) Using the provided dropper, aspirate the clarified supernatant from the **treated sample**. Carefully and vertically dispense 3 drops (approximately 60 μL) into the sample hole("S").
- 3) Allow the test card to sit at room temperature for 5-10 minutes to determine the results. Results obtained after 30 minutes are considered invalid.



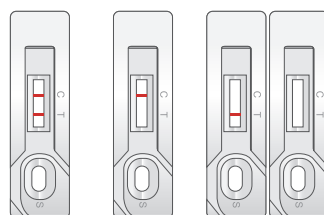
As with other diagnostic tests, a definitive clinical diagnosis should not rely solely on the outcome of a single test. Instead, it should be made by the veterinarian after evaluating all clinical and laboratory findings. By considering a comprehensive assessment, veterinarians can ensure a more reliable and accurate diagnosis and provide appropriate care and treatment for the animal.

Results Judgement

Negative: Only control ("C") line appears in the result window.

Positive: Both test("T") line and control("C") line appear in the result window.

Invalid: If the control("C") line does not appear, the result might be considered invalid.



Positive Negative Invalid

Notice

- 1) Please read the instructions carefully before testing. And a variety of reagents are only used for this experiment.
- 2) Avoid using expired or damaged products.
- 3) The kit should be allowed to return to room temperature after being removed from the refrigerator before opening. Once opened, it should be used as quickly as possible to avoid becoming ineffective due to moisture.
- 4) Avoid touching the white nitrocellulose membrane in the middle of the test card.
- 5) Avoid touching the sample hole.
- 6) The waste shall be regarded as pollutants. Please dispose of them properly in accordance with the relevant local regulations.

Results Interpretation

- 1) A negative test result indicates that there are no CDV antigens detected in the sample, and CDV infection cannot be ruled out if there are corresponding acute symptoms.
- 2) A positive test result indicates the presence of CDV antigens in the sample tested, suggesting a potential infection by the CDV. Further analysis is required, integrating clinical data and other diagnostic methods.

Limitation of the Test Method

Although Canine Distemper Virus Antigen Rapid Test Kit is highly accurate in detecting antigens against CDV, there is still a possibility of occasional false results. If uncertain or questionable results are obtained, additional clinical or laboratory tests may be necessary.