

# Rabies Virus Antigen (RBV Ag) Rapid Test Kit

## Technical Manual

(GICA)



Scan for more info.

Shenzhen Finder Biotech Co.,Ltd.

Web: [www.szfinder.com](http://www.szfinder.com)

Tel: +86 0755 23499025

Email: [techsupport@szfinder.com](mailto:techsupport@szfinder.com)

Add: Building B12, Life Science Industrial Park, Kuiyong Subdistrict,  
Dapeng New Area, Shenzhen, China

## Product Information

### Intended Use

This kit is used to detect rabies virus antigen in saliva secretions of dogs and cats. It can be employed for rabies virus infection screening, as well as auxiliary diagnostics.

### Principle

The kit uses colloidal gold immunochromatography assay (GICA). After being added to sample hole ( "S" ), the sample will move along the nitrocellulose membrane with the gold markers. If there are RBV antigens in the sample, it will make the test ( "T" ) line colored. If not, no color reaction will be produced. Regardless of a negative or positive result, the control ( "C" ) line should always appear, or else the result is considered invalid.

## Content

Package specification	20T/Kit
Test device (with disposable dropper)	20
Assay diluent	20
Sampling swab	20
Instruction	1

## Storage Conditions

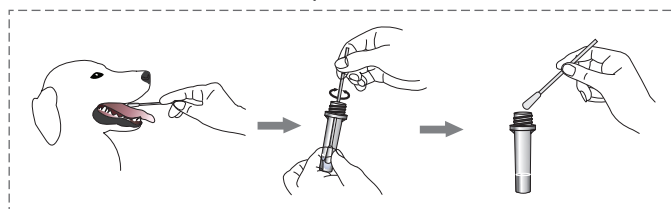
The kit shall be stored at 2°C to 30°C (35.6°F to 86°F) in dry environment. Avoid freezing.

Shelf life: 24 months. The date of manufacture is presented in the label of the box.

## Preparation of Sample

Use the sampling swab to collect saliva from the oral cavity. (The accuracy of the test results is directly influenced by the quality of the sample collection; ensure it is done correctly and adequately.

Immediately insert the swab into the assay diluent tube. Agitate the swab thoroughly until the sample is fully dissolved in the diluent. Squeeze out the excess liquid from the swab against the wall of the tube and discard the swab. The liquid obtained after allowing it to stand within the tube is the treated sample.

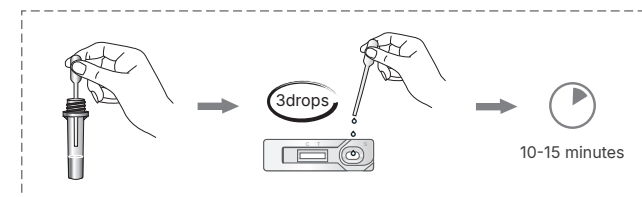


## Test Methods

- 1) Open the foil pouch, take out the test card and put it on a flat and clean work surface.
- 2) Using the provided dropper, aspirate the supernatant

from the treated sample. Carefully and vertically dispense 3 drops (approximately 60 µL) into the sample hole ( "S" ).

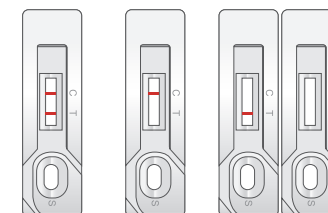
3) Allow the test card to sit at room temperature for 10-15 minutes to determine the results. Results obtained after 20 minutes are considered invalid.



## Results Judgement

**Negative:** Only control ( "C" ) line appears in the result window.

**Positive:** Both test ( "T" ) line and control ( "C" ) line appear in the result window.



Positive Negative Invalid

**Invalid:** If the control ( "C" ) line does not appear, the result might be considered invalid.

(Note: Deionized water, tap water, and normal saline cannot be used as negative controls.)

## Results Interpretation

A negative test result indicates that there are no RBV antigens detected in the sample, and RBV infection cannot be ruled out if there are corresponding acute symptoms.

A positive test result indicates the presence of RBV antigens in the sample tested, suggesting a potential infection by the RBV. Further analysis is required,

integrating clinical data and other diagnostic methods.

### **| Limitation of the Test Method |**

Although Rabies Virus Antigen Rapid Test Kit is highly accurate in detecting antigens against RBV, there is still a possibility of occasional false results. If uncertain or questionable results are obtained, additional clinical or laboratory tests may be necessary. As with other diagnostic tests, a definitive clinical diagnosis should not rely solely on the outcome of a single test. Instead, it should be made by the veterinarian after evaluating all clinical and laboratory findings. By considering a comprehensive assessment, veterinarians can ensure a more reliable and accurate diagnosis and provide appropriate care and treatment for the animal.

### **| Notice |**

- 1) Please read the instructions carefully before testing. And a variety of reagents are only used for this experiment.
- 2) Avoid using expired or damaged products.
- 3) The kit should be allowed to return to room temperature after being removed from the refrigerator before opening. Once opened, it should be used as quickly as possible to avoid becoming ineffective due to moisture.
- 4) Avoid touching the white nitrocellulose membrane of the result window.
- 5) Avoid touching the sample hole.
- 6) The waste shall be regarded as pollutants. Please dispose of them properly in accordance with the relevant local regulations.